

19265-73

Bars and strips of high-speed steel. Specifications

9373-60
5952-63

09 6200

10 1973 . 2678

01.01.75

2—92

(2—93)

(—)

3896—82.

(, . 3).

1.

1.1.
.1.

(2002 .) 1, 2, 3, 4, 5, 6, 1977 ., 1981 .,
1983 ., 1985 ., 1987 ., 1990 . (8- 77, 10-81, 2-84, 10-85, 2-88, 10-90)

© , 1973
@ , 2002

1.2.
.2.

2

	, %	, %
	1,00	+0,01
	. 1,00	±0,02
	. 1	+0,10
	12,00	±0,10
	. 12,00 » 15,00	±0,15
	» 15,00	±0,20
	. 1	±0,05
	1,00	±0,03
	. 1,00	±0,05
	0,50	+0,05
	. 4,0 » 5,00	±0,10
	» 5,00	±0,15
	. 1	+0,05
		+0,05
	»	±0,01
	»	±0,02

(, . 3, 4, 6).

2.

2.1.

2.2.

:

— 1133—71; — 2590—88 2591—88;
 — 4405—75;
 — 7417—75; — 14955—77 1 25 -

2.1, 2.2. (, . 2).

2.3.

I (80 200),
 II (150);

—
 —

18, II , : 40 2590—88,

„40- - 2590-88
 18—11— 19265-73
 18 , hi 1 7417—75, 6 5 -
 1051—73:

„ 18—hll 7417-75
 6 5- - 19265-73

(, . 3,4,6).

3.

3.1 .

(, . 3).
 3.1.

.3.

				, 1C	
			HRC ₃ (HRC),		
	,	,			
18	255	3,8	63(62)	1270	560
6 5	255	3,8	64(63)	1220	550
11 2	255	3,8	64(63)	1200	550
6 5	269	3,7	65(64)	1220	550
12	269	3,7	64(63)	1250	560
18 5 2	285	3,6	64(63)	1280	570
9 5	269	3,7	64(63)	1230	570
6 5 5	269	3,7	65(64)	1230	550
9 4 8	285	3,6	65(64)	1230	550
2 9 5	285	3,6	65(64)	1200	540

1. ±10° .
 2. -
 4.

12 , 9 5, 6 5 , 6 5 5 -
 255 (3,8), 18 5 2,
 9 4 8— , 269 (3,7).
 (, . 3,4,5,6).
 3.2.

		I	11
		1	1
	80	—	1
	. 80 150	1	2
	» 150 » 200	2	—
	50	—	1
	. 50 80	—	2
	» 80 » 150	1	2
	» 150 » 200	2	—

(
 3.3. (, , 2),
 3.4. (, . 6).
 3.5.

, .4.

4

6 5 5, 2 9 5, 6 5, 6 5 ,11 « 2, 9 5, »

« »

(
 3.5, 3.56 (, , 3).
 3.6. (, . 2).
 3.7.

0,3 2% — 20 ;
 0,5 1% — 20 .

3.8.

1,5 — 10 ;
 40 — 10 60 ;
 60 — 60 .

3.7, 3.8. (, . 3).
 3.9.

().
 (, . 3,4).

3.10. — , , 14955—77. 1051—73,

3.11.

3.12. (, , 25% , .3.7. 2),

3.13. 3.14. (, . 3).

3.15. .5.

5		
50	13	10
.50	10	9

(, . 3).

4.

4.1.

7566-94.

(, . 3).

4.2.

4.3.

—

4.4. — 10% , ,

4.5. :

1 , 30 — 15% ; 1 , 30

4.3—4.5. (, . 3).

4.6. — ,

4.7. (, . 6).

4.8.

4.9. —

100

4.10. —

4.9—4.10. (, . 3).

4.11.

7566—94.

4.12.

40

(, . 1,6).

4.13. (, . 3).

5.

5.1.

7565—81,	—	12344—88,	12345—2001,	12346—78,
12347-77,	12348-78,	12349-83,	12350-78,	12351-81,
12353-78,	12354-81,	12355-78,	12359-99,	12361-82,
28473—90				

(, , 1, 4, 5, 6).

5.2.

(, , 2),

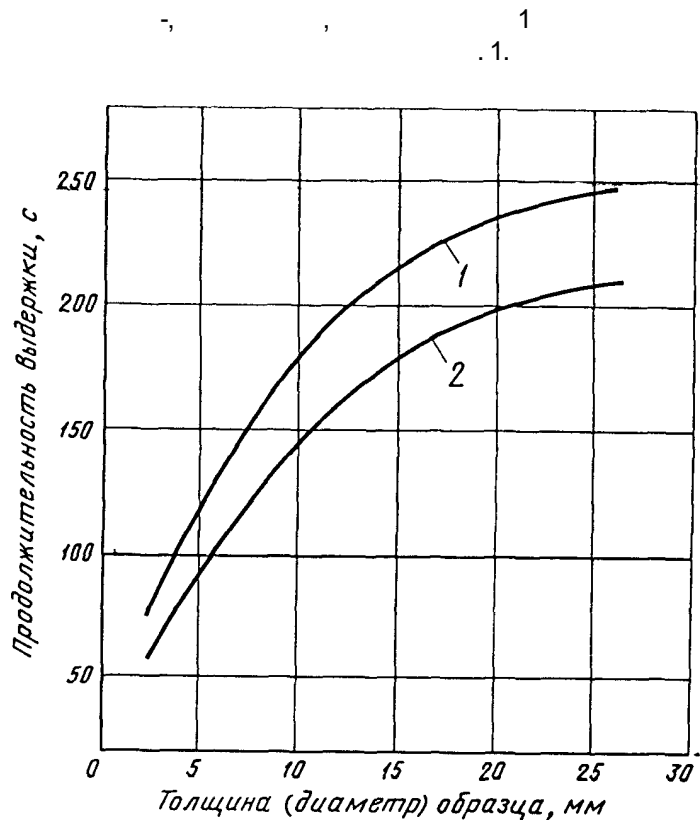
5.3.

9012—59

100

5.4.

9013—59

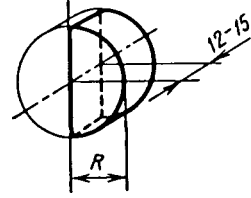


1— ; 2—

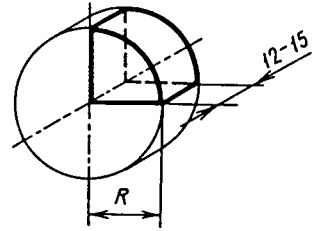
. 1

. 6 .

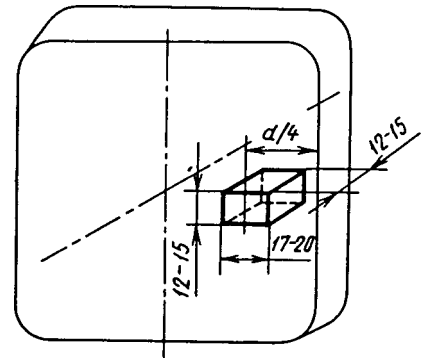
30



. 30 60



.60



5.3, 5.4. (, , 3).
5.5.

5.6. (). 4.5—4.10

5.7.
10243—75

2 .
5.6, 5.7. (, . 3).
5.8.

5.9.
30

6

4 %-
 900 °
 1 680—700 °
 10 %-
 .7.
 7

0,25
 0,25
 (90—100).
 »
 (400-500).
 11 18, 12 , 18 5 2, 9 4 8
 2, 9 5, 6 5 5, 2 9 5 1. 2 — 6 5, 6 5 ,
 1

5,
 (2, 3, 4, 5, 6).
 5.10. (2).
 5.11. 1763—68.
 2.

(6).
 5.12. (3).
 5.13. 5639—82
 . 7. 6

.1, .5.4. . 3.
 (6).
 5.14.

(3).
 6.
 6.1. 7566—94

: 6 5- ;
 3

. 10 19265-73

40

100 %-

;

— 14955—77,

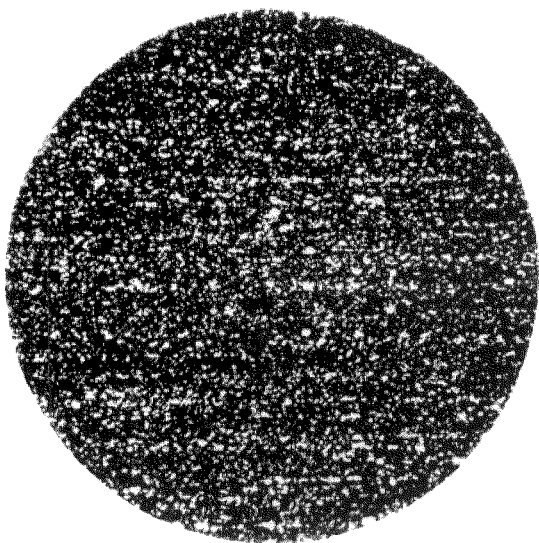
- 1051-73;

.6. (, , 4),

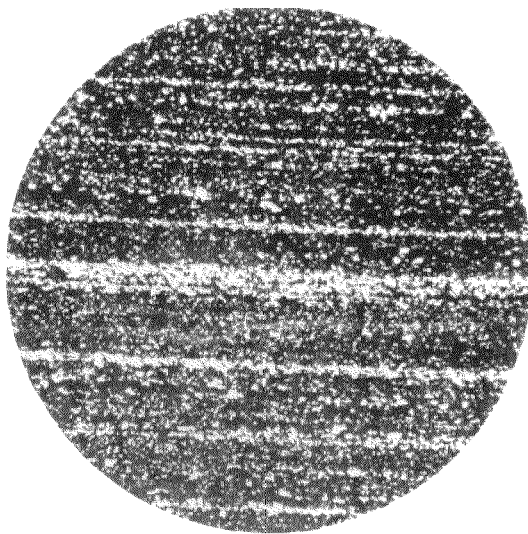
		(1)	(- 2)
1	-	2	1
2	,	4	2
3	.	6	4
	.	6	4
4	.	8	5
	.	8	5
5	,	13	6
	.	13	6
6	,	15	9
	.	15	9
	.		
7	,	20	14
8		25	18

1

(100)

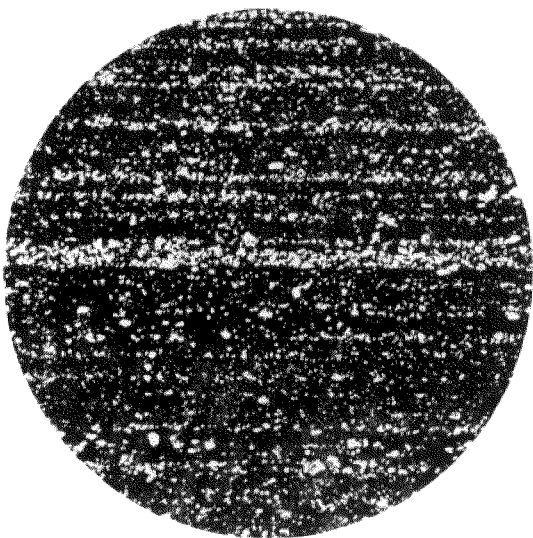


A

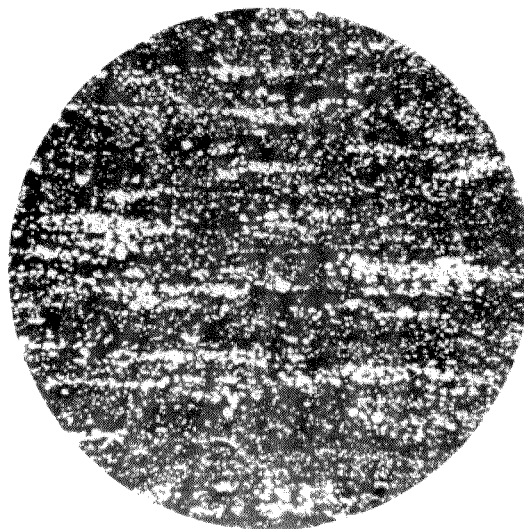


1

A

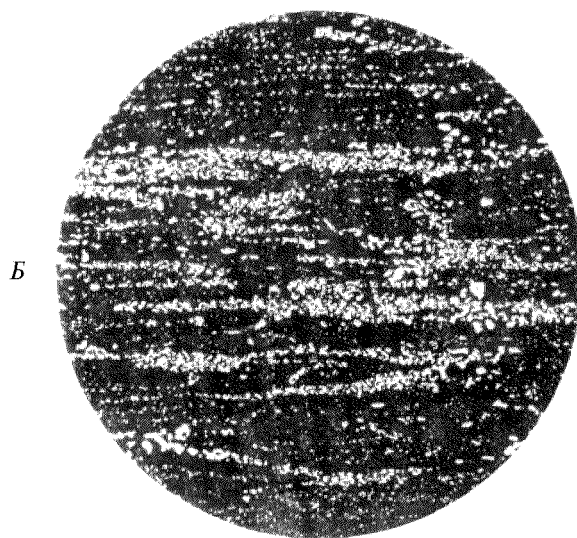
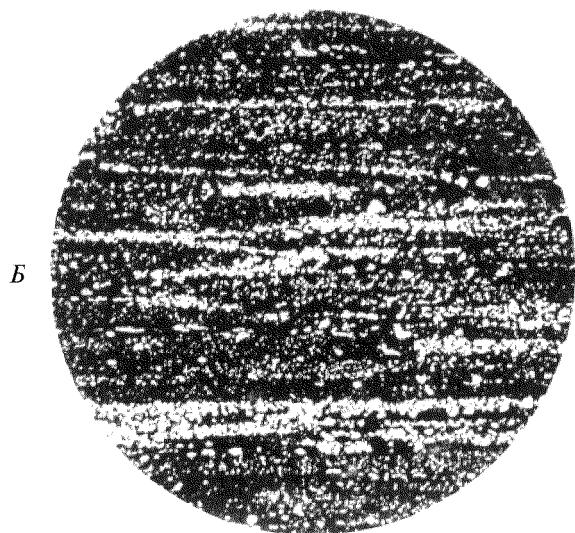
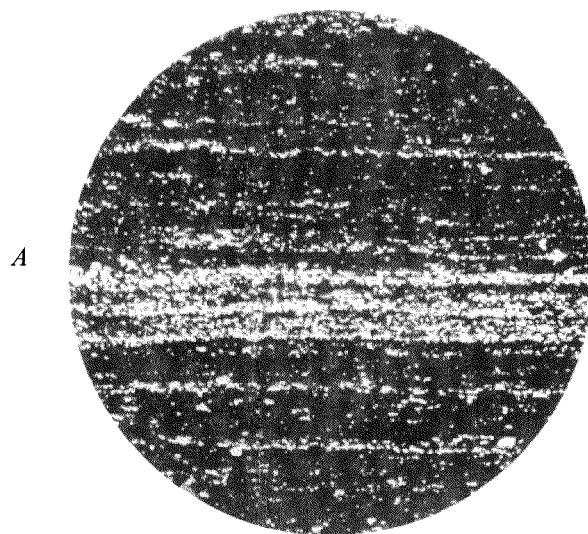
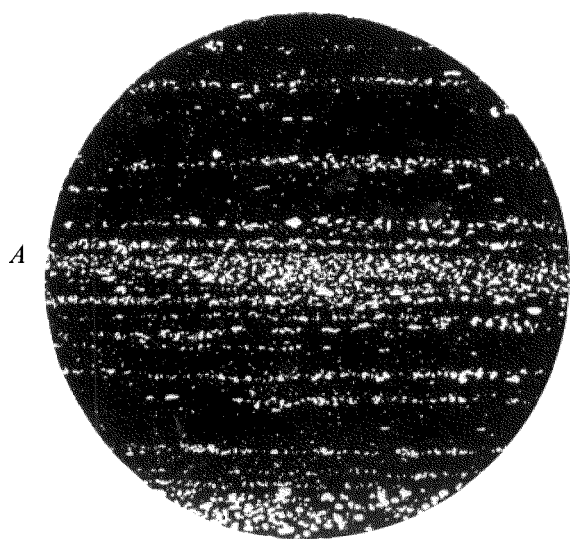


B



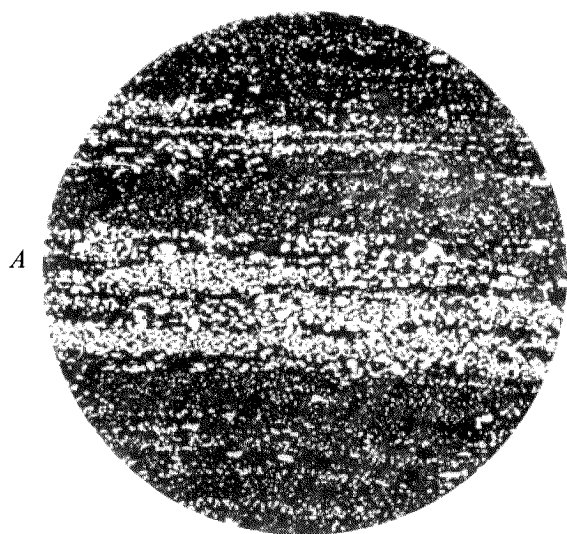
2

3



4

5

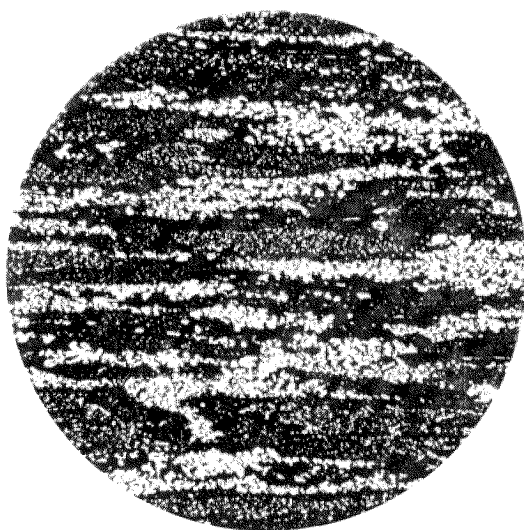


A



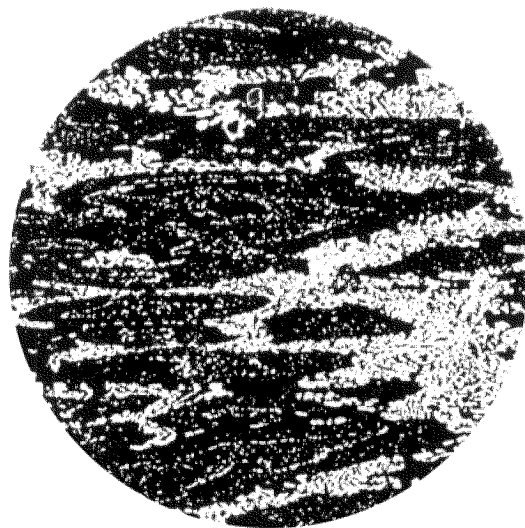
B

Балл 7



B

6



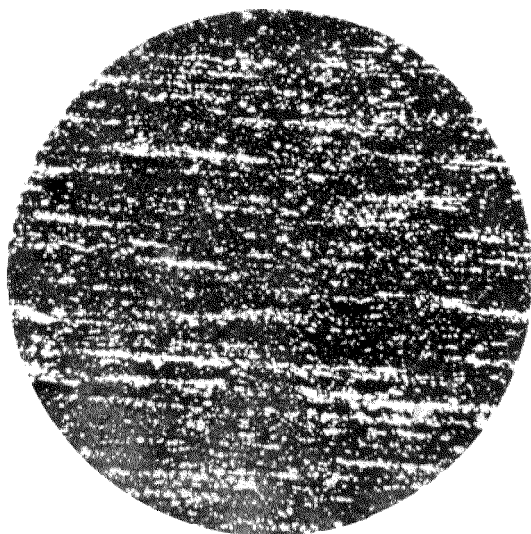
B

8

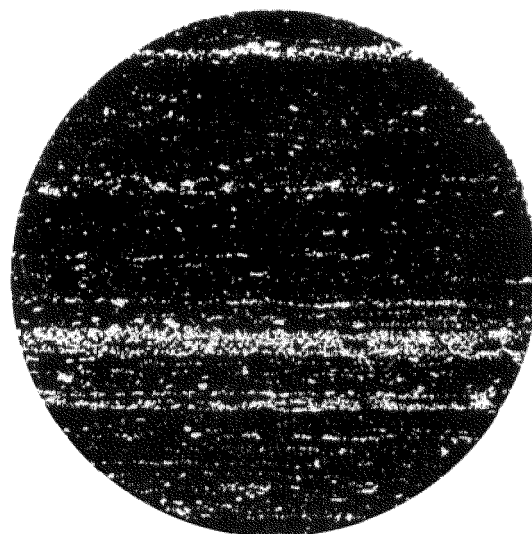
2

(100)

A

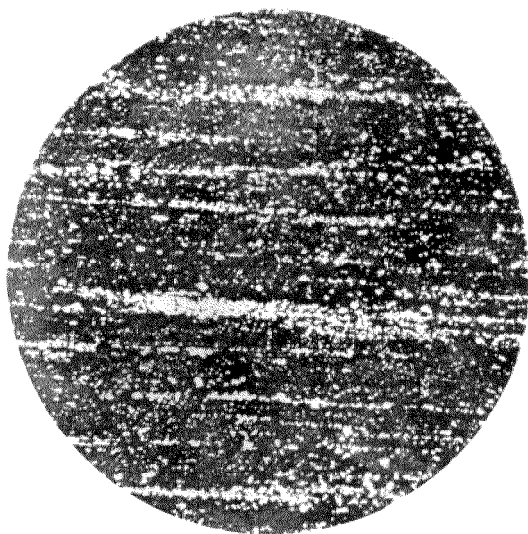


A

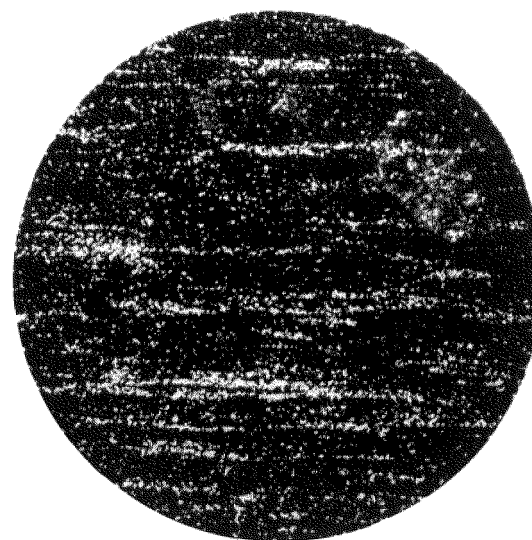


1

A

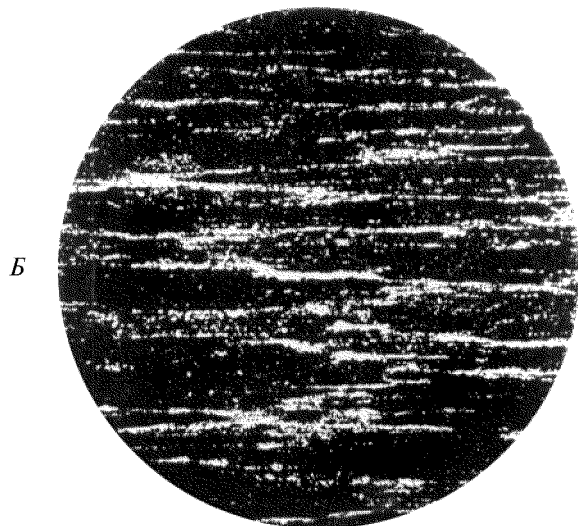
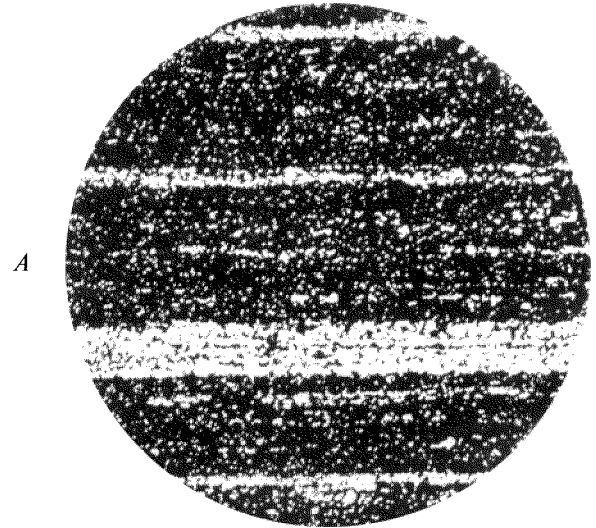
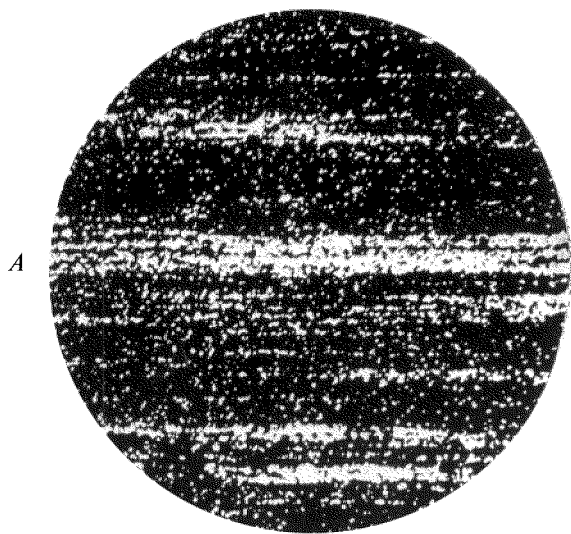


B



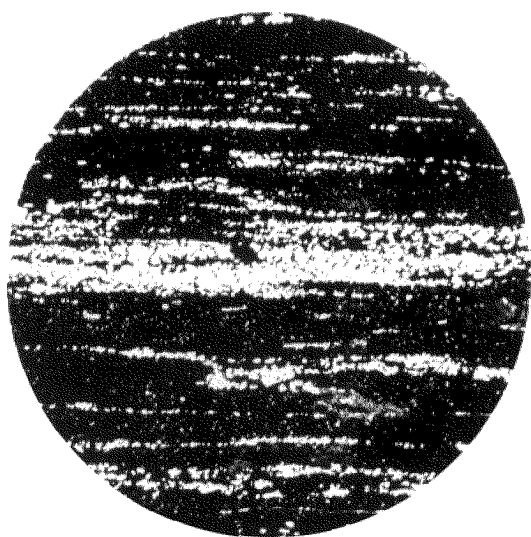
2

3

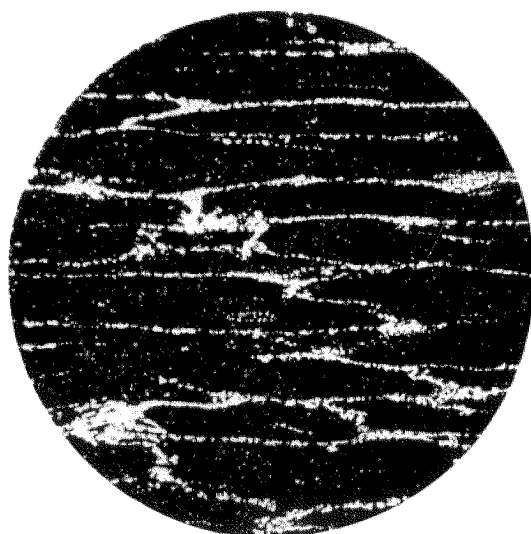


4

5



Б

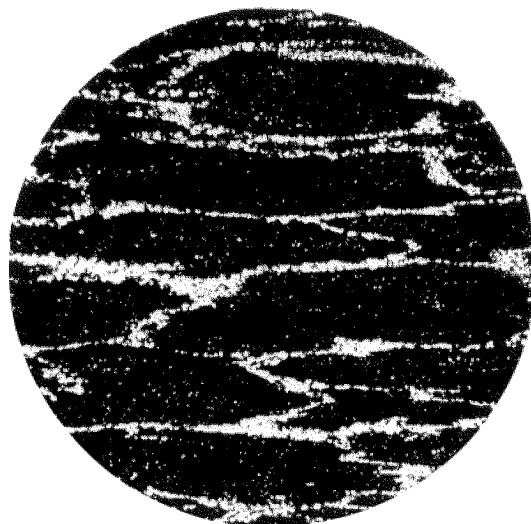


Балл 7



6

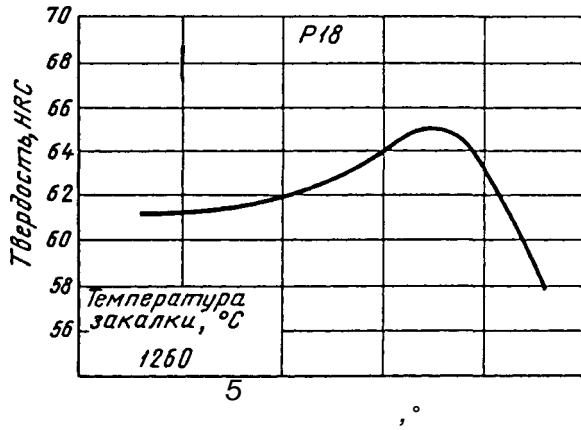
Б



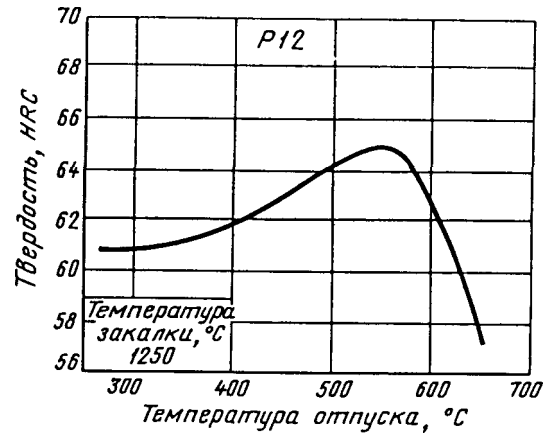
1. (, . 6).
2. (, . 2).

				- 59HRC ₃ 4 , fC		
18			-	620		-
6 5	-			620		-
11 2	-		-	620		-
6 5		-		630	(80 / 2)	784
12		-	-	630		-
18 5 2	-	-		640		-
9 5	-	-	-	630		-
6 5 5		-		630		-
9 4 8	-	-	-	630		-
2 9 5			-	630		-

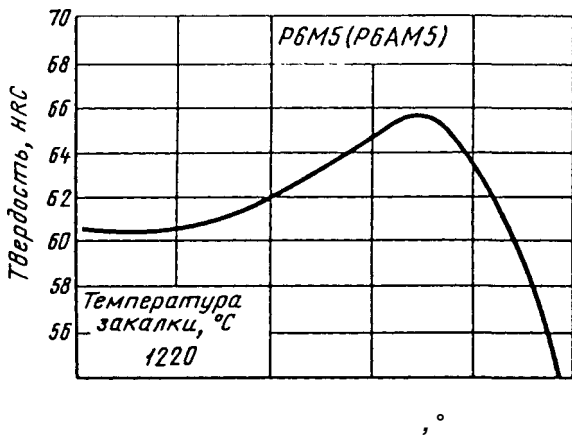
3. (, . 3, 4, 6).



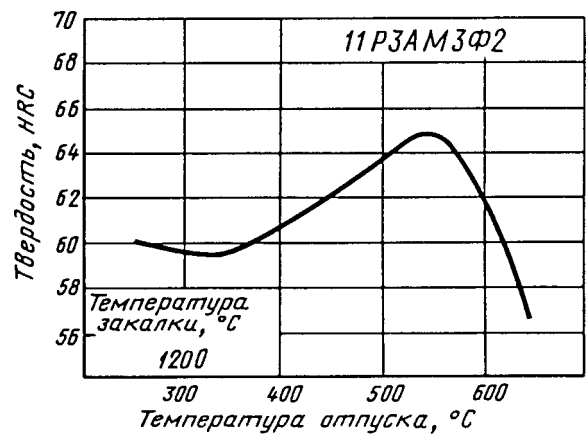
. 2



. 3

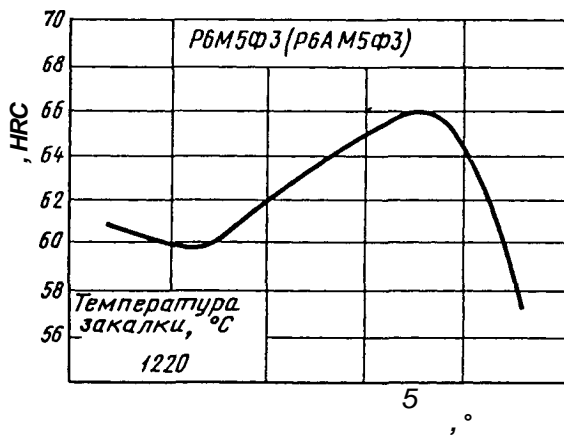


. 5*

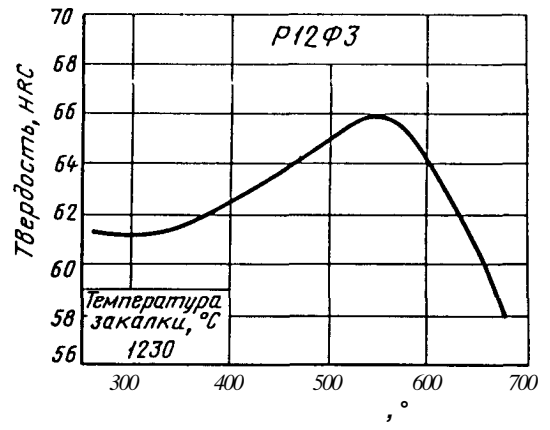


. 6

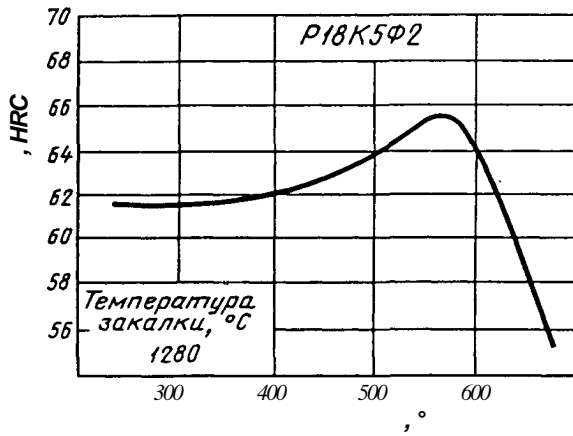
. 4. (, . 6).



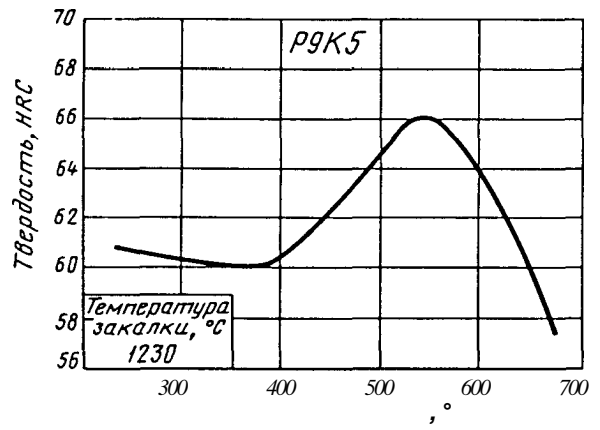
. 7



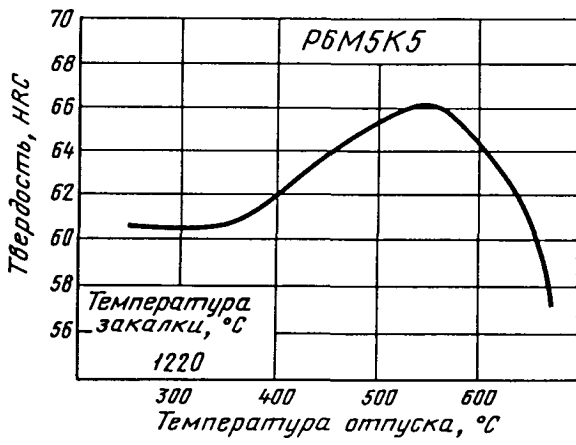
. 8



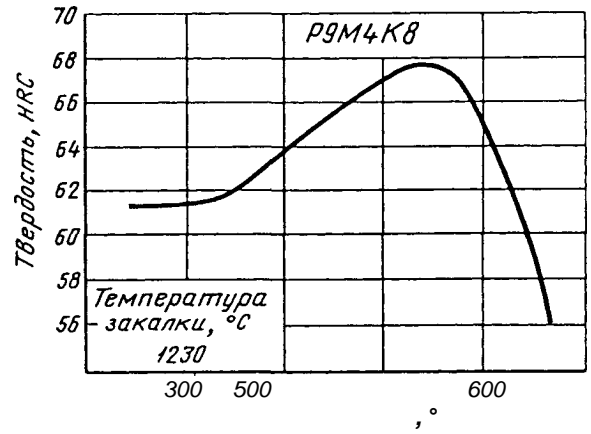
. 9



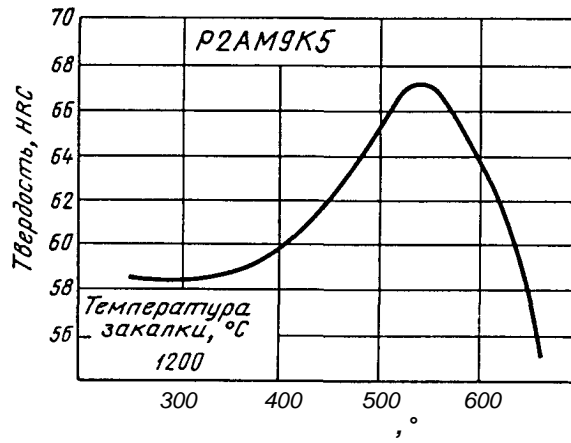
. 10



. 11



. 12



. 13

4. (, . 3, 6).

